

P/N 52011-01
MODEL LB102R

Balboa Instruments
Incorporated
BALBOA INSTRUMENTS INC.
TUSTIN, CA.



Certified to comply with the limits for a class B computing device pursuant to subpart J of part 15 of the FCC rules

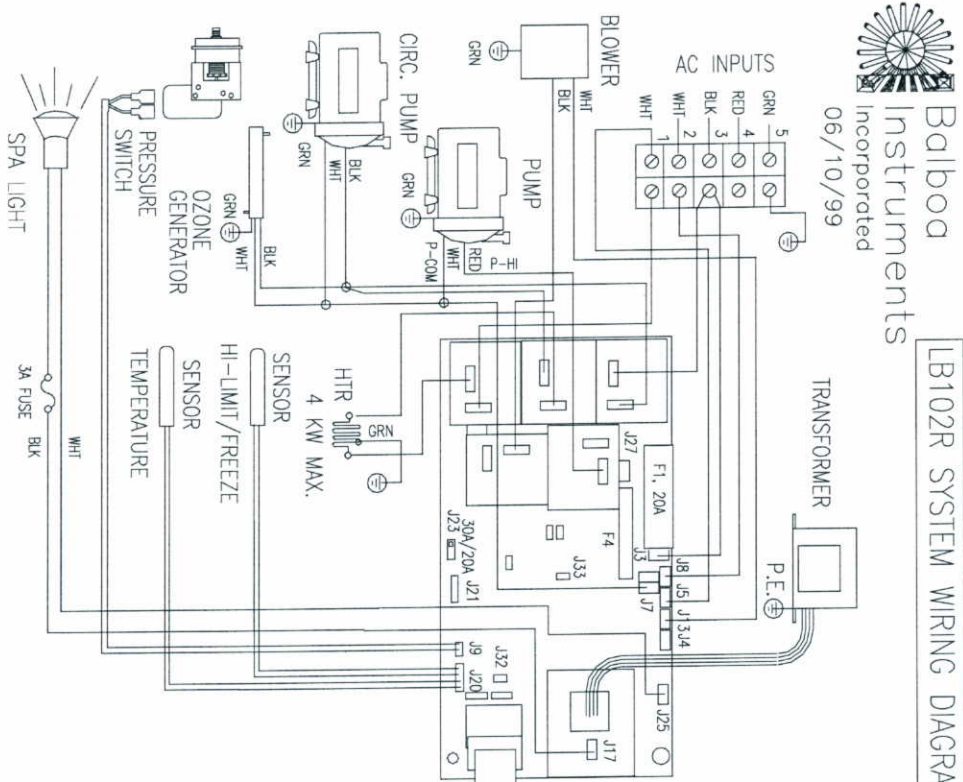


MODEL: WH-LB102R-CCAJ

PAT. NO. 4618797

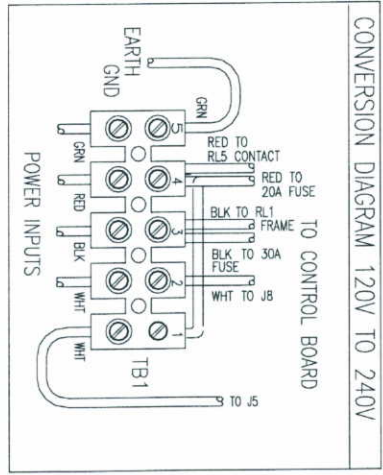
GROUND

| | | | |
|-----------------|------------|--------------|----------------|
| GRN Ground | RED Hot | BLK Hot | WHT Neutral |
| USE COPPER | | 120V/240V | |
| WIRE MIN. 8 AWG | | 16A/32A 60Hz | |



Balboa Instruments
Incorporated
06/10/99

LB102R SYSTEM WIRING DIAGRAM



CONVERSION DIAGRAM 120V TO 240V

120V TO 240V CONVERSION INSTRUCTIONS:

1. CONVERSION MUST BE PERFORMED BY A QUALIFIED, LICENSED ELECTRICIAN. HARDWARE ONLY.
2. DISCONNECT FROM POWER & REMOVE CORP.
3. MOVE RED WIRE (TB1-1) TO (TB1-4) AS INDICATED BY DASHED LINES.
4. MOVE THE HEATER MODE SELECTOR (J23) ON THE CONTROL BOARD FROM 20A TO 30A POSITION.

If this unit is to be permanently connected, connect only to a circuit that is protected by a ground fault circuit interrupter (G.F.C.I.).



CONTROL PANEL