

FOUR FUNCTION CONTROLS



FF-1094

DESCRIPTION: The FF-1094 Series controls offer reliable On/Off control of two pieces of equipment with one air button, from up to 150 feet. The two-circuit design can be used to operate any two electrical devices up to 20 Amps, including two-speed pump. The standard FF-1094 can be adapted for use with an external time clock, while the FF-1094TC uses its own internal 24-hour time clock which is easily programmed in 15-minute increments. The FF-1094LTC includes the internal time clock, plus an auxiliary circuit which is controlled by a second air button.

MAXIMUM LOADS: 120VAC, 20 AMP, 1 HP, 60 Hz, 2 wire plus ground
240VAC, 20 AMP, 2 HP, 60 Hz, 3 wire plus ground (Neutral required)

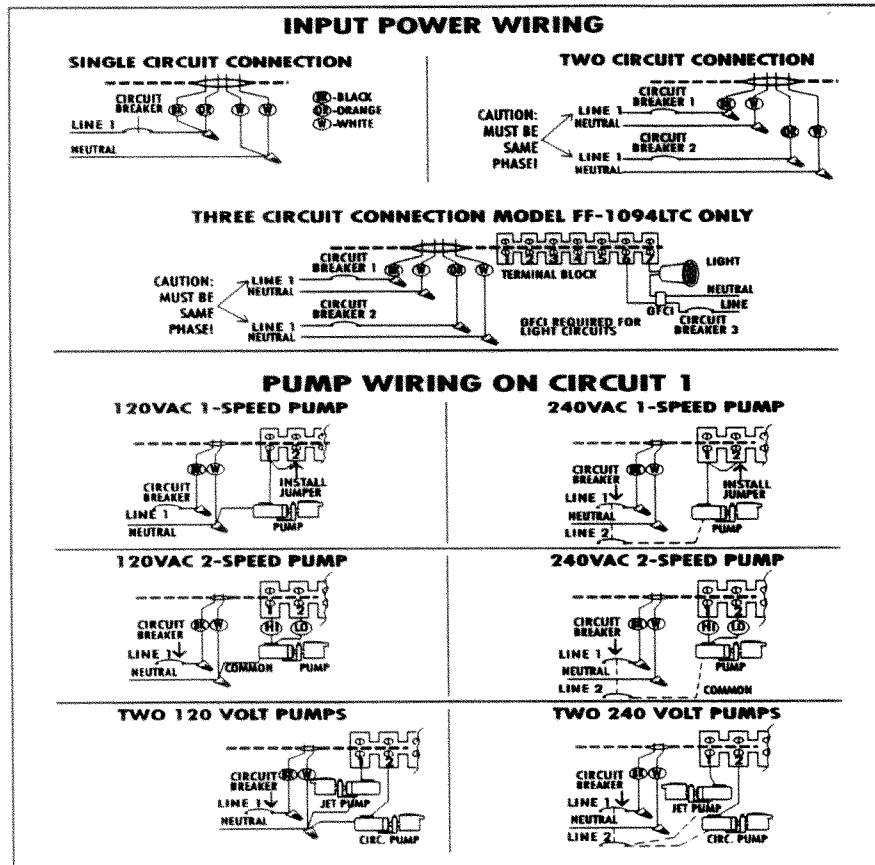
BUTTON CONTROL DISTANCE STANDARDS

	#15	#10	#4
FF-1094 Series	150 FT	150 ft	75 ft

EQUIPMT	1	2	3	4
2-SPEED PUMP	Off (low)	High Speed	Off (low)	High Speed
BLOWER	Off	On	On	Off
TIME CLOCK MODELS				
2-SPEED PUMP	Timer Controlled (low)	High Speed	Timer Controlled (low)	High Speed
BLOWER	Off	On	On	Off

OPERATION: The air button sequences equipment as follows:

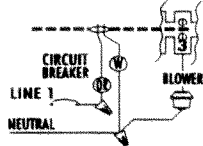
TYPICAL INSTALLATION:



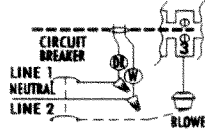


BLOWER WIRING ON CIRCUIT 2

120 VOLT BLOWER

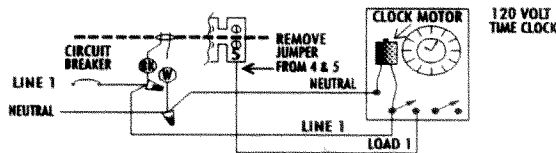


240 VOLT BLOWER

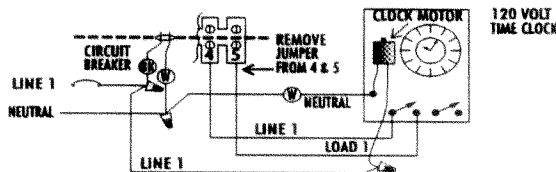


EXTERNAL TIME CLOCK WIRING MODEL FF-1094 ONLY

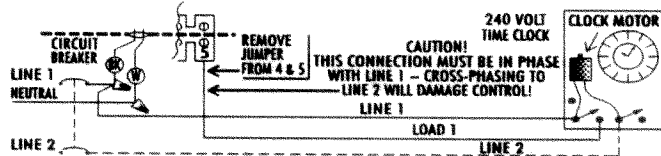
120 VOLT TIME CLOCK - FOR 1-SPEED PUMP



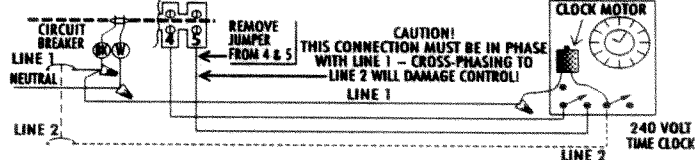
120 VOLT TIME CLOCK - FOR 2-SPEED PUMP



240 VOLT TIME CLOCK - FOR 1-SPEED PUMP

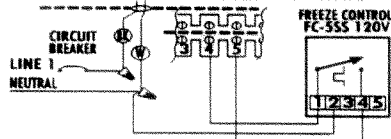


240 VOLT TIME CLOCK - FOR 2-SPEED PUMP

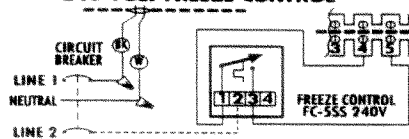


FREEZE CONTROL WIRING

120 VOLT FREEZE CONTROL



240 VOLT FREEZE CONTROL



FF-1094, *continued*



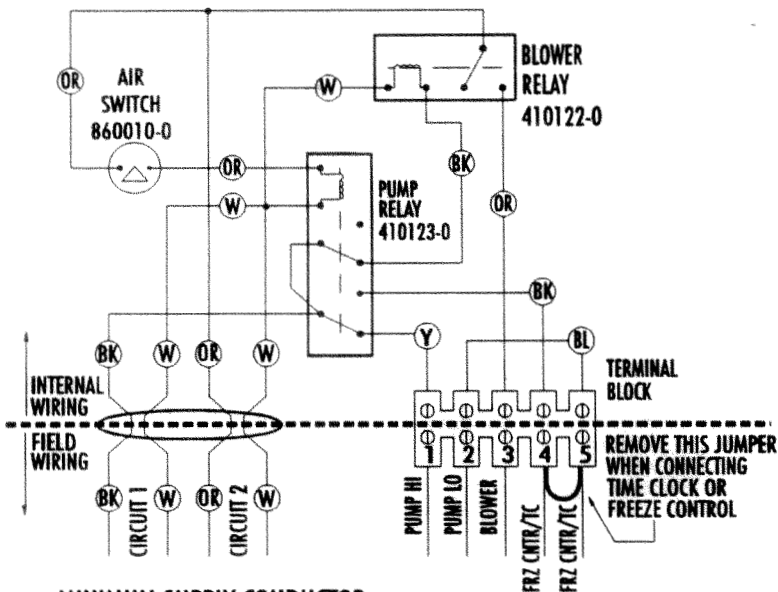
INTERNAL
SCHEMATIC:

FF-1094

CAUTION: RISK OF ELECTRIC SHOCK. NOT TO BE INSTALLED WITHIN A FIVE-FOOT REACH PATH OF THE WATER'S EDGE.

CAUTION: USE COPPER CONDUCTORS ONLY.

SUITABLE FOR OUTDOOR USE.



**MINIMUM SUPPLY CONDUCTOR
RATED 25 AMPS, FUSE OR
BREAKER RATED 25 AMPS.**

**NOTE: SEE INSTRUCTION SHEET
FOR DETAILS OF POWER SUPPLY
CONNECTIONS.**

**NOTE: SEE INSTRUCTION SHEET FOR DETAILS
OF EQUIPMENT CONNECTIONS.**

**NOTE: FOR SINGLE SPEED PUMP,
CONNECT TO TERMINAL 1 (HI) AND
JUMPER TO 2 (LO). THEN REMOVE
JUMPER FROM TERMINALS 4 & 5.**

610100-5

© 1994 Len Gordon Co 08/94