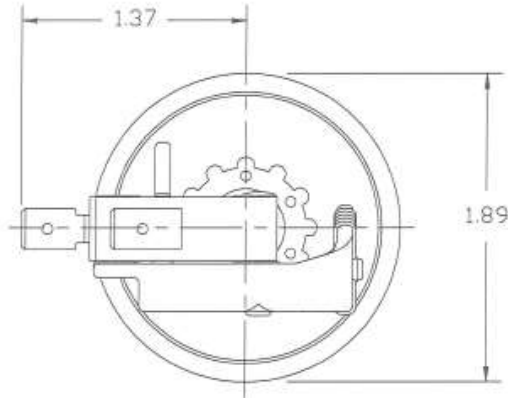


SPECIFICATIONS: MODEL 4010P



ELECTRICAL

(B)

Switch: Single pole, normally open (SPNO)

Connection: .250 x .032 thick (6.35 x .813 mm) male quick connect

Rating: 25 Amps, non-inductive, 120 to 277 VAC @ 190°F (88°C) for 30,000 cycles

Note: Ratings below are at 190°F (88°C) for 100,000 cycles unless otherwise noted.

25 Amps non-inductive, SPNO or SPNC, 120 to 277 VAC, 160°F (71°C) ambient

20 Amps non-inductive, SPNC 120V to 277 VAC

20 Amps non-inductive, SPNO 120V to 277 VAC

1 HP (.746 kW) @ 120 VAC

2 HP (1.492 kW) @ 240 VAC

8.3 FLA and 49.8 LRA @ 277 VAC

154 VA pilot duty @ 24 VAC

772 VA pilot duty @ 120 VAC

1157 VA pilot duty @ 240 VAC

924 VA pilot duty @ 277 VAC

MECHANICAL

Pressure setpoint: Adjustable

Pressure range: 1 to 6 psig (6.9 to 41 kPa) on pressure rise or pressure fall

Operating pressure, max: 50 psig (345 kPa)

Temperature: 32°F (0°C) to 160°F (71°C) or 190°F (88°C) (See Electrical Rating)

Mechanical life: 100,000 cycles

Pressure media: Air or fluids compatible with PBT (Polybutylene Terephthalate) and EPDM.

Pressure Connection: 1/8 npt - integral plastic fitting/mounting pan.

MOUNTING

Sealing: 1/8 npt fitting is designed to seal without the use of thread sealants. However, it is recommended to use standard sealants to ensure a leak-free joint. Teflon tape, pipe dope, and RTV silicone rubber sealants are all compatible with the plastic resin used to mold the pan/fitting.

Tightening: Thread the switch into the heater plate, pipe coupling, etc. until finger-tight (snug). Tighten the switch three (3) turns past finger-tight, which will provide approximately 10 to 14 in-lbs tightening torque. Up to one (1) additional turn is acceptable for proper terminal positioning.

CAUTION: (HAND TIGHTEN ONLY) Do not use wrenches, adjustable pliers, etc. Tool assisted tightening may damage the tapered pipe threads and will void warranty.

The snapswitch used is approved to ENEC standards by the KEMA approval agency.

