


H136000

P/N 51423-02
MODEL H136

Balboa Instruments
Incorporated
BALBOA INSTRUMENTS INC.
TUSTIN, CA.


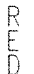
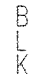
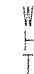
 LISTED US
74254

Certified to comply with the limits for a class B computing device pursuant to subpart J of part 15 of the FCC rules

60 HZ

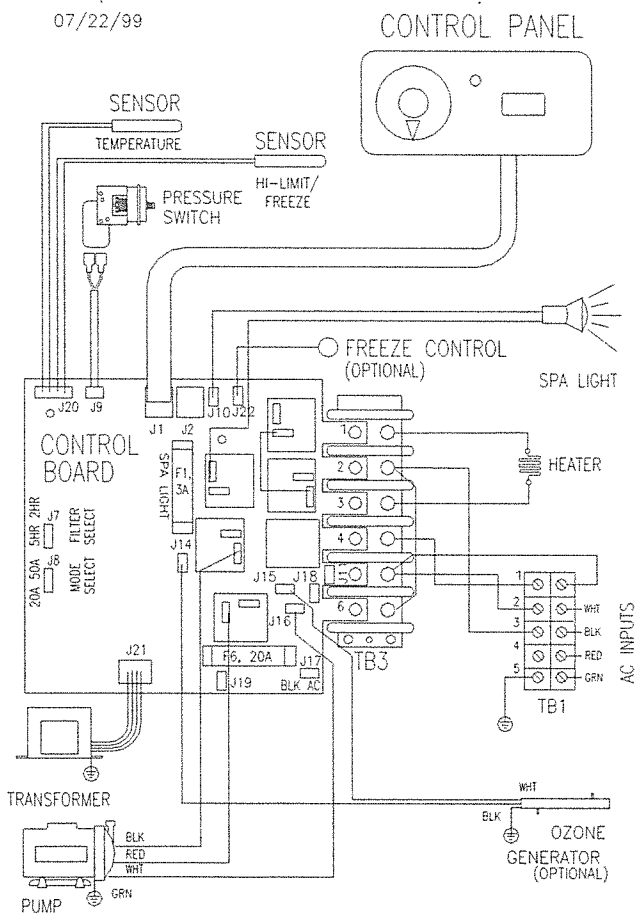
MODEL: DU-H136-CCAH

PAT. NO. 4618797

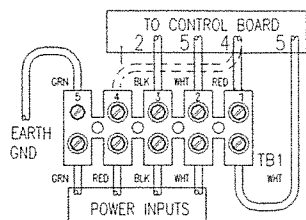
 GRN Ground	 RED Hot	 BLK Hot	 WHT Neutral
USE COPPER WIRE MIN. 6 AWG		120V/240V 18A/40A 60Hz	

Balboa Instruments
Incorporated
07/22/99

H136 SYSTEM WIRING DIAGRAM



CONVERSION DIAGRAM 120V TO 240V



CONVERSION INSTRUCTIONS:

1. CONVERSION MUST BE PERFORMED BY A QUALIFIED, LICENSED ELECTRICIAN, HARDWARE ONLY.
2. DISCONNECT FROM POWER & REMOVE COORD.
3. MOVE RED WIRE (TB1-1) TO (TB1-4) AS INDICATED BY DASHED LINES.
4. MOVE THE HEATER MODE SELECTOR (J8) ON THE CONTROL BOARD FROM 20A TO 50A POSITION.

If this unit is to be permanently connected, connect only to a circuit that is protected by a ground fault circuit interrupter (G.F.C.I.).